

34 Alizé

Classic Sport Cruisers

Windy
SPIRIT OF SCANDINAVIA



HISTORY AND LEGACY

WINDY was established in 1966 by Hugo Vold. His father was a fisherman, and his family had many anxious moments awaiting his return as storms raged in the Skagerrak. All his father's boats were called 'Vindy', and he brought every one of them safely back to port. Vold shared his father's love of, and deep respect for, the sea.

Following his university education, he became a boat builder. He wanted his vessels to be known for their seaworthiness and high quality, and he called his company 'Windy' in honour of his father's sturdy fishing vessels. At a time when Scandinavian producers ruled the European market, revolutionising boating and showing millions how to have fun on the water, Vold hired the best designers, sought out the finest boat builders and craftsmen and not only created a world-beating brand, but succeeded in turning the Windy name into a marque of quality. 58 years on, Windy Boats is proud to live according to Vold's legacy, and to build production and custom boats which are acknowledged throughout the world as second to none.



UNRIVALLED SCANDINAVIAN QUALITY

When Windy Boats was established in 1966 our first sports boats set new standards for performance and craftsmanship. More than 58 years on, we're still driven by the urge to be the best.

All Windy Boats bear the hallmark of quality without compromise, drawing on five decades of boat building excellence, and centuries of Scandinavian seafaring heritage. Put simply, we build better boats because we are Windy. It is in our DNA.



PRECISION ENGINEERED, HAND-FINISHED

Windy's reputation is built on quality and craftsmanship. Our award-winning deep V-hulls are renowned for delivering an exhilarating, yet stable and dry ride. Our production facilities in Västervik, Ostroda and Słupsk are among the most advanced in Europe, employing vacuum infusion moulding to produce stronger, lighter and more fuel-efficient hulls. Distinctive interiors by leading superyacht designers combine clean Scandinavian lines with luxurious detailing. Every boat is hand-finished with Windy's customary perfectionism using the highest quality components and finest materials. For Windy customers, only the best will do.





34-FEET OF PURE EXCELLENCE

The **Alizé** is the long-awaited sibling to the Shamal launched in 2020. The Alizé combines a beautifully proportioned design, with timeless elegance and luxury. This stunning design, the aggressive deep-V hull, and powerful Volvo engine options, make the Alizé irresistibly tempting for the full gamut of life on the ocean wave, and for speeds of 50 knots.

The all-new Alizé reaffirms Windy's long-established position as the European trend setter and market leader when it comes to Sport Cruisers.





34 Alizé

EXTERIOR

With a large sunbed and a passageway to port, the seat aft of the helmsman's position can be slid back and the cockpit table can be lowered to create an inviting sunbed. An optional wet bar with cool box, refrigerator and sink in the cockpit are practical facilities for taking full advantage of the bathing platform aft.

Secure and comfortable grabrails are integrated into the windscreen for passengers who like to feel the wind in their hair. All deck fittings on the Alizé are made using the highest quality materials to withstand the harsh elements out at sea. The cushions are offered in several different colours. Make a statement with your boat and wrap the hull in the colour of your choice. Contact your local dealer for the latest colours.



34 Alizé



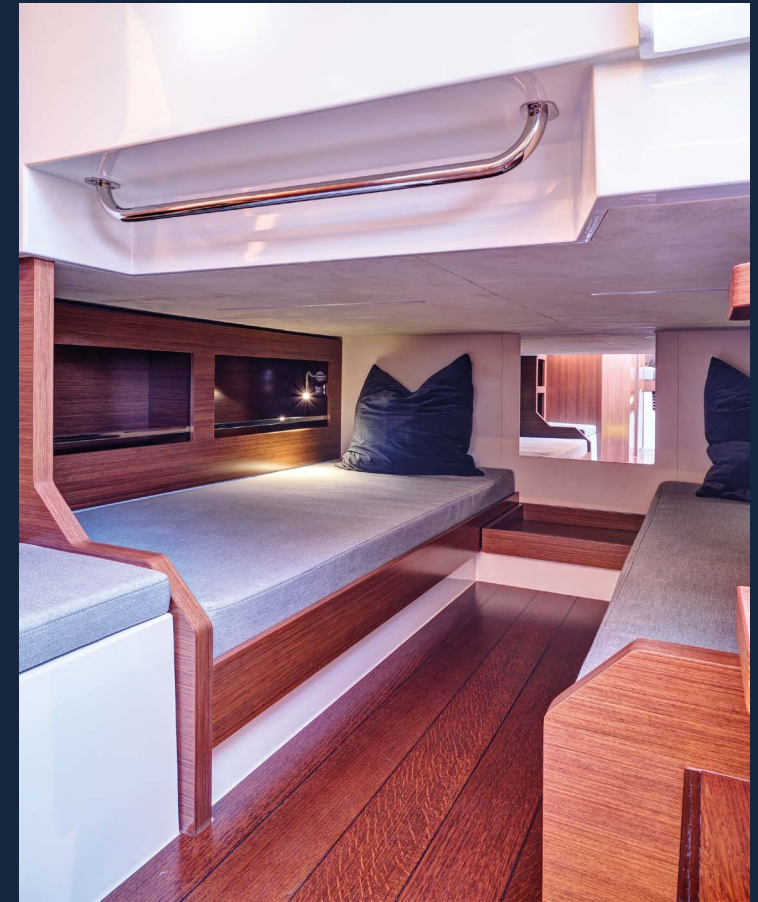


EXQUISITE

Below deck, the genuine quality of the boat builders' craft is revealed with an American walnut finish as standard. The interior features an attractive galley, double bed and overhead cupboards throughout. Additional twin beds can be found aft which can easily convert to a larger double bed, allowing up to four people to sleep comfortably on the Alizé. The spacious day head features a luxurious separate shower compartment.



ADAPTABLE | Whether you are out on the water with the kids or entertaining guests, the Alizé can accommodate for every occasion.



INVITING | All spaces of the interior seamlessly blend into each other creating a feeling of openness.

B4 Alizée



LUXURY | The interior is offered in a contemporary Icecool Oak or classic satin-finished American walnut.



LAYOUT

The generous cockpit seating area makes the 34 Alizé a superb all-rounder, allowing you to entertain on a nice day out whilst having all the amenities for an extended stay.



PERFORMANCE

The 34 Alizé is proud to be powered by Volvo Penta. The deep-V hull that is synonymous with Windy Boats is designed to tackle the toughest of Scandinavian sea conditions and get the best from the ever-willing Volvo Penta engines.

**VOLVO
PENTA**

The 34 Alizé offers the speed you would associate with much smaller boats whilst providing the comfort of a larger model.

With a wide range of diesel and petrol engine options, the 34 Alizé is capable of speeds in excess of 50 knots.



SPECIFICATION 34 ALIZÉ

A wide variety of options are offered along with a customisation programme for individual taste

CONSTRUCTION

- GRP components built in vacuum infused resin with lightweight sandwich foam core. High-tech laminate specification (WIN-TECH)
- Hull and deck are white gelcoat

PROPULSION & STEERING

- Volvo Penta Aquadrive system
- Electronic steering
- Electronic throttle as standard
- Low speed mode as standard
- Rudder indicator for Engines*
- Dynamic positioning system*
- Bow thruster – Sidepower SE60*
- Humphree X300 interceptors
- Auto list and coordinated turn features for the Humphree system*

MACHINERY

- Thermo acoustic insulation
- Volvo Penta system
- Fire suppression system in the engine room
- Electrically operated engine hatch

ELECTRICAL SYSTEM

- Engine AGM batteries
- Service AGM batteries
- Shore-power 220V with battery charger (incl. Shore-power cable)
- Generator (5kW) with battery*
- Extra AGM Battery*

HEATING & VENTILATION

- Air conditioning system: 16,000 BTU*
- Defroster*
- Diesel heater*

NAVIGATION EQUIPMENT

- 1 x Raymarine Axiom 2 XL 16
- Upgrade - 19" or 22" Axiom 2 XL 19
- Cover for instrumentation*
- Echo sounder*
- Volvo Penta autopilot*

ENTERTAINMENT SYSTEM

- Fusion Apollo Radio/Stereo with bluetooth & DAB
- Amplifier, 4 x 7.7" Speakers & 2 x 6.5"

SPEAKERS

- Upgrade - Fusion sound system (Upgraded amplifier & 7.7" speakers, 1 x 10" subwoofer)*

ANCHORING & MOORING EQUIPMENT

- Anchor with bow roller, Electric winch & 34 m of galvanised chain (8mm). Can be operated from foredeck and from the helm station*
- Anchor winch at stern. TX-Engbo system with 10kg Stainless Anchor*
- Chain Counter*
- Mooring Kit, anchor, 4 x ropes, 4 x fender with socks*

PLUMBING SYSTEMS

- Auto-Bilge pumps with level sensor.
- Fuel tank capacity: 600 litres
- Fuel valves with safety cut offs at the helm.
- Water tank capacity: 170 litres
- Fresh water pump
- Septic tank 80 litres with pump
- Deck side discharge point for the holding tank.
- Calorifier: 40 litres*

DECK LAYOUT

- Large fore deck area
- Central walkway to fore deck with steps on Dashboard
- Ergonomic helm console with navigation equipment and custom pilot chairs.
- Social seating area positioned centrally - with large table
- Hand crafted cockpit table with Hi-Low table leg with infill Cushion
- Large aft sun pad with moving backrest with storage
- Bimini & Fabric
- Foredeck Sun cushion*
- Canopy & Fabric*
- Cockpit fridge below port helmseat*

MAIN CABIN

- Double berth with high quality mattress
- Overhead lockers
- 230V / 240V & USB sockets
- Ceiling lighting
- Reading lights
- Mood lighting

GALLEY

- Sink with hot and cold water
- Corian Worktop
- Diesel cooker
- Refrigerator
- Overhead cupboards
- Drawer storage
- 230V & USB sockets
- Mood lighting

DAY HEAD/BATHROOM

- Wash basin with hot and cold water tap
- Separate shower compartment with hot/ cold water and grating
- Electric toilet
- Overhead locker
- Sink base cabinet
- Socket for 230v - shaver/ hairdryer.
- Mood lighting
- Tooth brush/ glass holders/ towel hooks
- Mirror with Backlight
- Extractor Fan
- Opening port light

DECK EQUIPMENT

- All fittings crafted and cast from high grade stainless steel.
- Dedicated fender storage locker with net.
- 6 x Cleats.
- Windy Flagpole
- Freshwater deck wash.
- Stainless steel Bathing ladder &

MID CABIN

- Twin berth with high quality mattress
- Wardrobe
- Storage cupboards port and starboard
- 230V & USB sockets
- Mood lighting
- Ceiling Lights
- Reading Lights
- Infill mattress for double bed conversion (can be stowed under bed)*

HELM POSITION

- Ergonomic helm position.
- Nextel anti-glare dashboard
- Windy sports steering wheel
- Compass

STORAGE

- Ample Storage for Wakeboard/waterskis
- Navigation lights
- Engine room lights
- Deck courtesy lights
- Non-slip decking as standard
- Towing point in the bow*
- Water-ski hook*
- Water-ski rack*
- Underwater lights*
- Cockpit Mood lighting*
- Synthetic laid decking to the cockpit and bathing platform*

COCKPIT WET BAR (OPTIONAL)

- Electric grill
- Sink with hot and cold tap.
- Top loading cold storage.
- Rubbish bin

MISCELLANEOUS

- Alternative light gelcoat colours on hull*
- Custom painted/lacquered hull colour*
- Vinyl foil wrapped Hull*
- Antifouling*
- Waterline Decal*
- Harbour Cover*
- Carpet set for cockpit*
- Crockery set (6 pcs)*
- Windshield washer*
- Upgrade - Custom Upholstery from Sunbrella/Spradling / Niroxx*

* Option

OVERVIEW 34 ALIZÉ

Length Over All:	10.30m
Beam:	3.15m
Height:	2.70m
Draft:	0,65m (without drive leg)
Weight:	Approx. 5.7t
Material:	Resin infused GRP
Naval Architect:	Espen Øino International
Design exterior:	Espen Øino International
Design interior:	Espen Øino International
Engineering:	Windy Design

ENGINE PACKAGE 34 ALIZÉ

Twin Volvo Penta D4-320 DPI	Approx. 44 Knots*
Twin Volvo Penta V8-430	Approx. 45-47 Knots*
Twin Volvo Penta D6-400 DPI	Approx. 47-49 Knots*
Single Volvo Penta D6-440 DPI	Approx. 36-37 Knots*
Twin Volvo Penta D6-440 DPI	Approx. 50 Knots*

* Subject to selected options, load and sea conditions





FIRST FOR
QUALITY
SINCE 1966

Disclaimer: All material and information in this brochure is for general information purposes only. All renderings must be regarded only as a preliminary non-binding visual presentation.

SECOND TO NONE



WINDY SCANDINAVIA AB • SÖDRA VARVSGATAN 27 • 593 50 VÄSTERVIK • SWEDEN
TEL.: +46 490 258 850 • contact@windyboats.com • www.windyboats.com